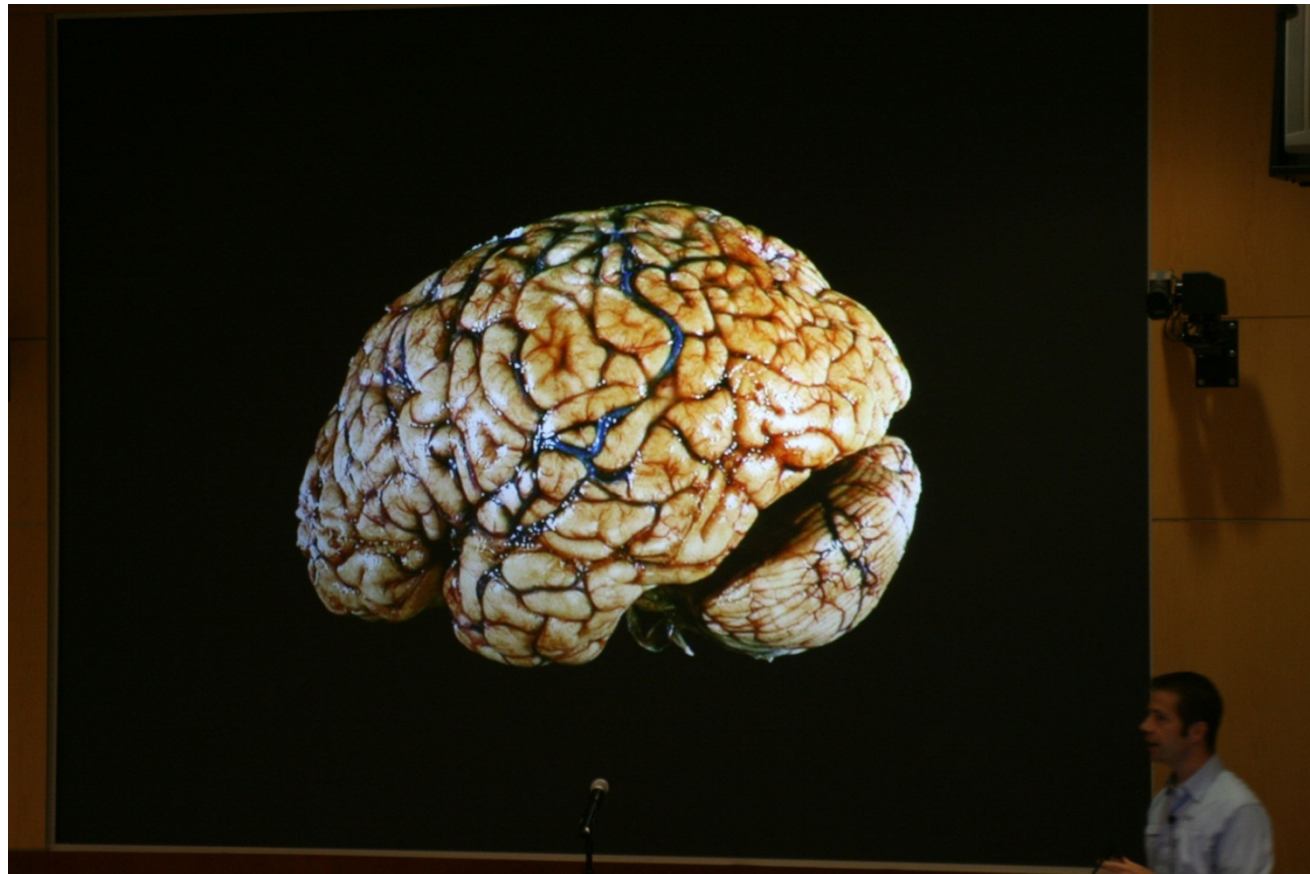
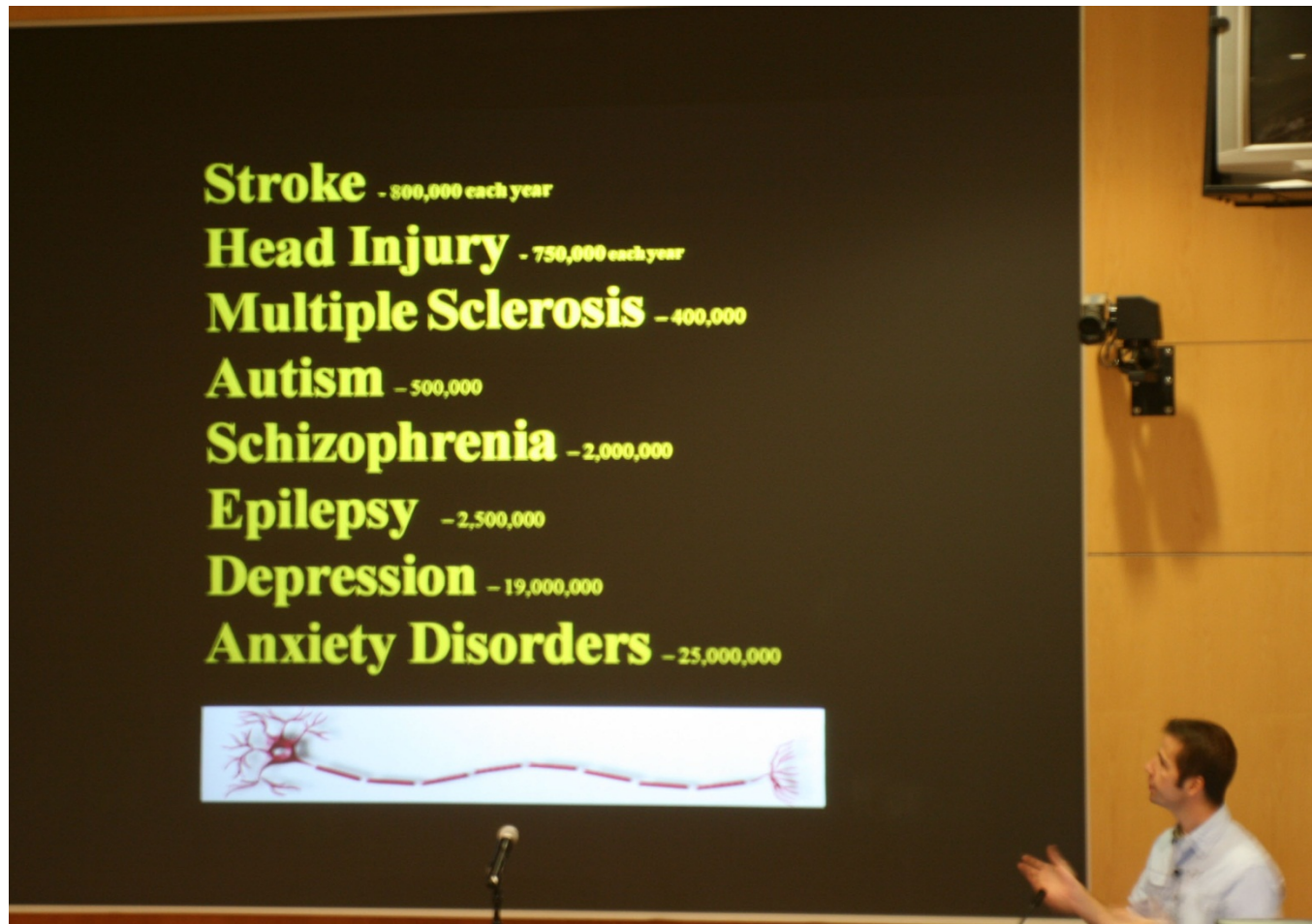


“Helping the Brain Repair Itself”, by Dr. Michael Kilgard


Joint Seminar with UT Dallas Retirees
September 14, 2011



Dr. Kilgard discusses range of brain issues and number of people affected



Stroke - 800,000 each year
Head Injury - 750,000 each year
Multiple Sclerosis - 400,000
Autism - 500,000
Schizophrenia - 2,000,000
Epilepsy - 2,500,000
Depression - 19,000,000
Anxiety Disorders - 25,000,000



The diagram shows a single neuron with a cell body (soma) on the left, several dendrites extending from it, and a long axon extending to the right. The axon is covered in myelin sheaths, represented by red segments. The axon ends in a terminal button on the right.

Dr. Kilgard shows fascinating movie of brain cells connecting



For more details on the Brain Research work being
done in Dr. Kilgard's Lab at UT Dallas --
copy & paste in the link below into your browser's
address box:

<http://www.utdallas.edu/~kilgard>